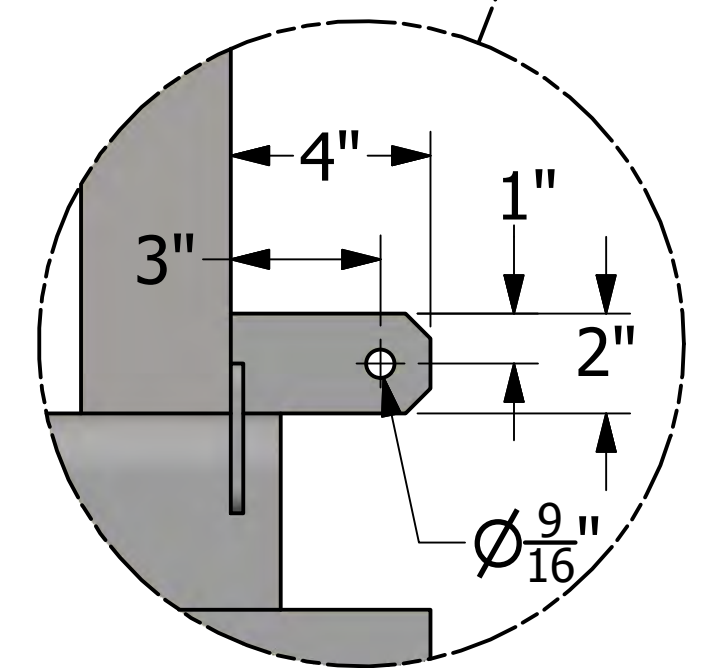
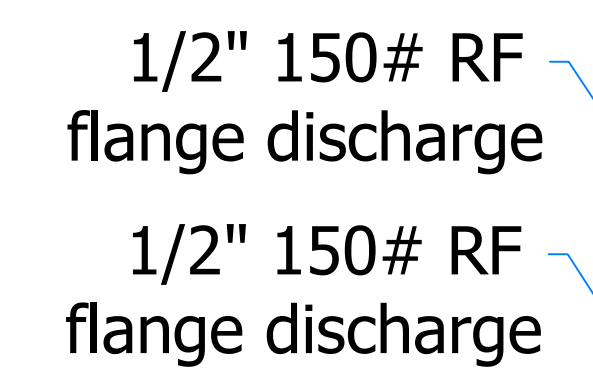
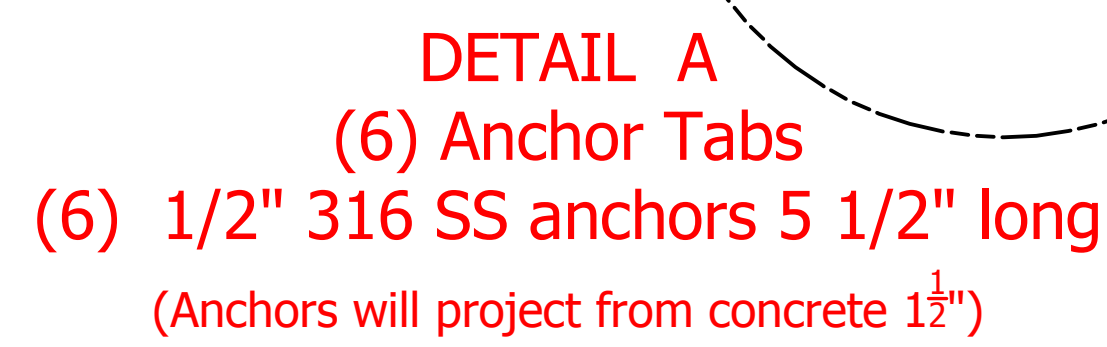
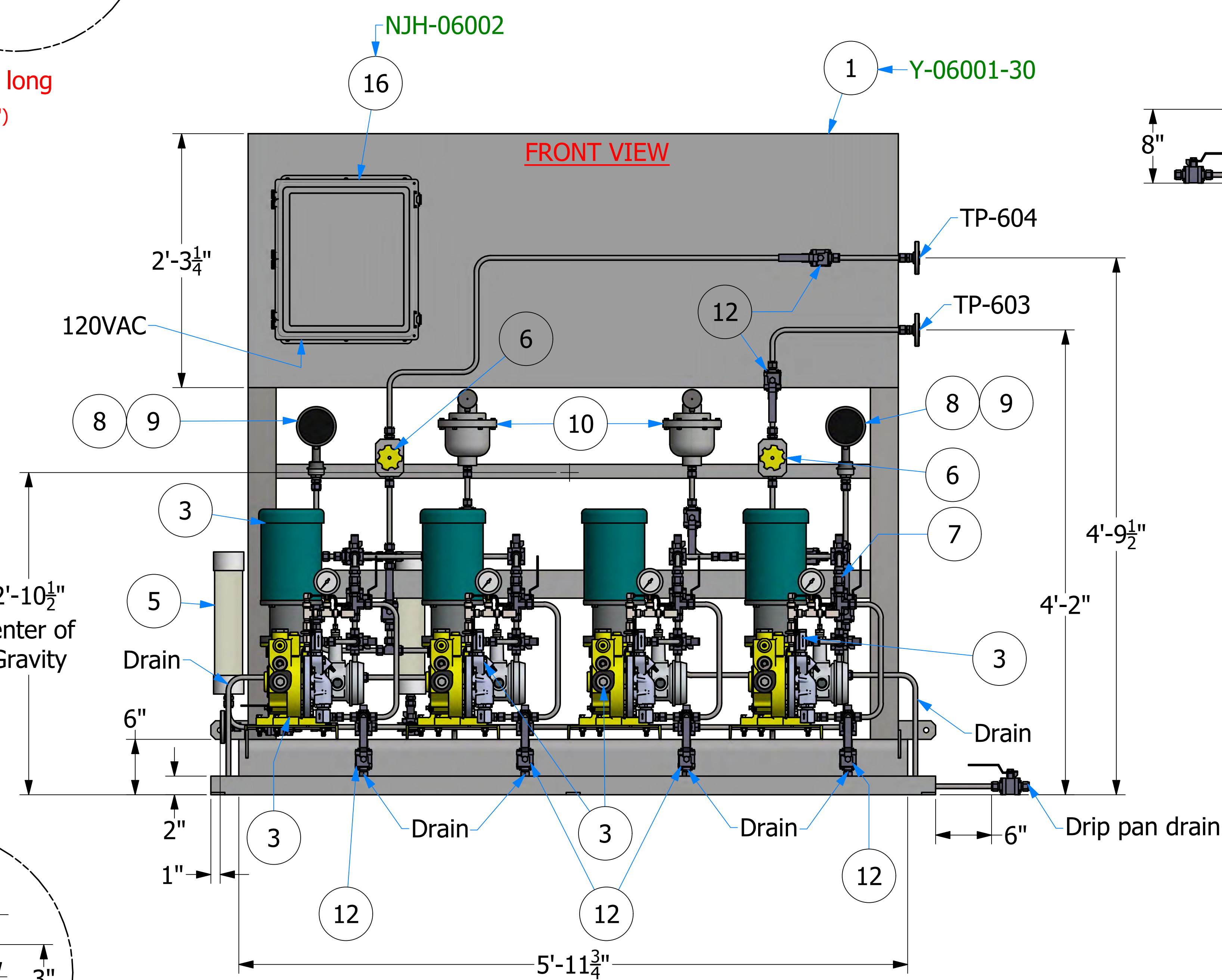
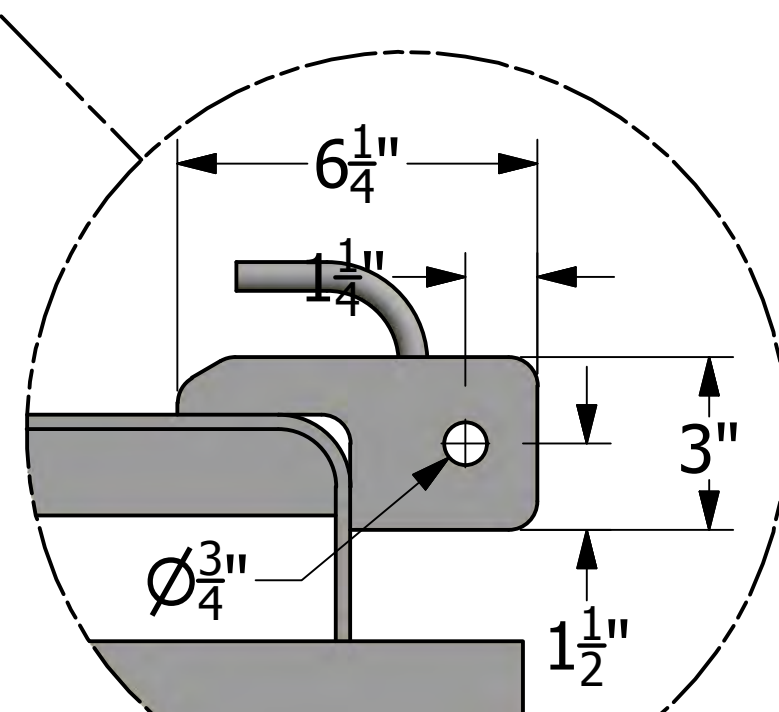
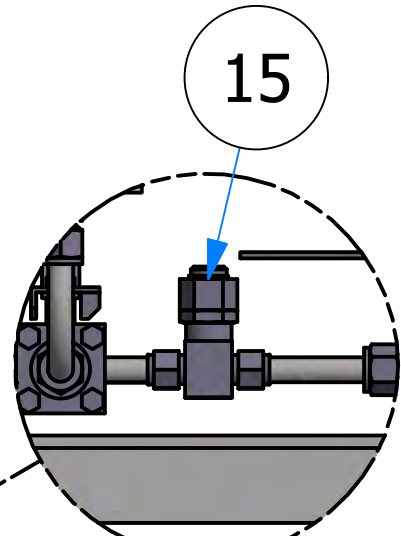


Tag #'s

Tie-in Table		
S.No	Tie-in no.	Service
1	TP-603	GN out
2	TP-604	MS out
3	Mention no.	GN in
4	Mention no.	MS in




DETAIL C
(2) Grounding lugs



Note:

- Skid will be anchored once set in place.
- Lifting skid from lifting plates using straps with 1/2" shackles.
- All equipment on the skid are internal grounded.
- Field calibration column vent should extend above tank.
- All piping will be 316SS tubing 0.065

Scale:	.13	Original size	1
Nominon:			CAJUN CONTROL SYSTEMS
YCI Project #			
Job Name		Cooling Chemical Dosing MS6207 & GN8020	
		Job No.	Document No. Rev 0

[illegible]